



horryelectric.com

MAIN OFFICE
 P.O. Box 119
 Conway, SC 29528-0119
 (843) 369-2211



**TO REPORT
 POWER OUTAGES ONLY**
 (843) 369-2212

BOARD OF TRUSTEES

- Johnny M. Shelley
President
- Eugene Harriott Jr.
Vice President
- Elaine D. Gore
Secretary/Treasurer
- Aaron C. Johnson
- Franklin C. Blanton
- Ronald H. Floyd
- Jody D. Prince
- Debbie Vereen Givens
- Frederick 'Freddy' Thompkins

EXECUTIVE VICE PRESIDENT & CEO
 J. Reed Cooper, P.E.

CO-OP ATTORNEY
 Kenneth R. Moss

CO-OP NEWS EDITOR
 Jennifer A. Cummings
jennifer.cummings@horryelectric.com

Horry Electric Cooperative, Inc. is an equal opportunity provider and employer.

Horry Electric Cooperative Inc. is a not-for-profit, member-owned organization providing information and energy-related services on a fair and equitable basis.



A Touchstone Energy® Cooperative



Have an upcoming event?

Invite Horry Electric to attend

CONNECTING WITH THE COMMUNITY is something we are all passionate about at Horry Electric. We enjoy

the opportunity to meet with members, community leaders, first responders, businesses, teachers and students. It's a chance for us to share what makes electric cooperatives unique—from electrical safety to energy efficiency, rates and storm preparedness.

One of the seven cooperative principles is Education, Training and Information. Not only do we focus on this with employees, but we prioritize this principle with you, our members, because we want to make sure you understand everything from how your cooperative works to how to stay safe around electricity.

Speaking events

Are you searching for a speaker to attend a monthly business or civic group meeting? Consider inviting one of our trusted energy advisors. If you have questions about the way you're billed, how the rate structure works or ways you can reduce your energy use, our team can guide you every step of the way.

In 2025, we attended more than 70 community events across Horry County. Twenty of those were educational presentations on the rate structure. There is a lot of misinformation on platforms like NextDoor and Facebook. As your trusted energy advisor, we want you to get the information directly from the source. Our team is committed to serving the members of Horry Electric and we're here to answer any questions you may have.

Safety demonstrations

Safety is our first concern, as our motto

states, and that starts with education. We offer two types of live demonstrations that are great for career days, summer camps or other community events.

"Trouble in Tiny Town" is an interactive exhibit that focuses on the dangers of electricity and power lines. Students see what happens when objects come in contact with a live wire, but in a safe and controlled setting.

Lineman demonstrations offer a look in what a typical day in the life of a lineman is like. Experienced linemen explain their daily responsibilities while showcasing the tools and safety gear they use. When space allows, we bring a bucket truck for an outdoor demonstration.

Submit a request

If you're interested in a trusted energy advisor speaking at your event or having Horry Electric come for a safety demonstration, we have two forms available on our website. You can also scan the QR codes at right to submit a request form. We'll follow up for more information and confirm if we have a team available to attend.

We look forward to connecting with you!



SAFETY DEMO

Schedule a safety demo.



SPEAKING EVENT

Schedule a speaking event.

J. REED COOPER, P.E.
 Executive Vice President and CEO



South Carolina Rep. Kevin Hardee (left) and Sen. Greg Hembree (right) presented Boyd's daughters, Trenny Neff and Sharra Bruton (from left), with a special Joint Resolution from the House of Representatives and Senate.



In February, Boyd's family accepted the HEC Lady of the Year award on her behalf.

PHOTOS BY JENNIFER CUMMINGS

Honoring a remarkable woman

HEC names 46th Lady of the Year

PEARL BOYD'S LIFE was a testament to her dedication to her community and commitment to service. Her long career at McLeod-Loris Healthcare and McLeod Seacoast focused on caring for others. Her life outside of work was no different. She spent her time working on the 100-acre family farm or providing care to the elderly and those in need in the Daisy community. She was a devoted mother, grandmother and great-grandmother, blessed with two daughters, five grandchildren and six great-grandchildren.

"Our mother cared about the neighbors in her community and surrounding areas served by Horry Electric," says her daughters, Sharra Bruton and Trenny Neff. "She was always concerned about the members and their families and was willing to help when needs arose. She actively supported our father, Henry Boyd, during his 42 years of service as a board trustee. Through this affiliation, she treasured her relationships with the HEC employees and her fellow WIRE members."

Sadly, Boyd passed away on Dec. 15, 2025, at the age of 80. At the WIRE (Women Involved in Rural Electrification) luncheon in February she was named Horry Electric's 46th Lady

of the Year. Her daughters accepted the award on their mother's behalf.

"We both feel Mama would have been very shocked and surprised she was named the Lady of the Year," says Bruton and Neff. "She was not a person who ever expected recognition for her contributions over the years."

Since 1979, The Miss Leo G. Knauff Leadership Award has celebrated women rooted in leadership and service—those who pour their hearts into serving others, often quietly and behind the scenes. It honors heart, dedication and a genuine commitment to the community.

The award's namesake, Miss Leo, was an electrification advisor for Horry Electric. Beyond that, she was a pioneer, teacher and visionary whose work was driven by heart and purpose. When electricity was new to rural homes, Miss Leo helped families understand how to use electricity safely, efficiently and meaningfully.

Like Miss Leo, Boyd set a standard for leadership rooted in service and heart.

"Her legacy reflects the strength of women who lead not for recognition, but because they care deeply about their community," says Reed Cooper, Horry Electric executive vice president and CEO. "That was Mrs. Pearl—she



One of Boyd's favorite activities was working in the yard or her garden. On this day, one of her six great-grandchildren, Jacob, came to help.

PHOTO PROVIDED BY BOYD FAMILY

was the one who always jumped in to help because she truly cared about the person, even if she didn't know them. She led with her heart."

Sticking with the theme of the day, special guest Miss South Carolina Sarah Kay Wrenn spoke to the luncheon group about keeping heart at the center of what they do and reminded them to prioritize keeping their hearts healthy.

INTERESTED IN JOINING HEC'S WIRE CHAPTER?

Visit horryelectric.com/wire to sign up. Contact Susan Brown, WIRE coordinator, at susan.brown@horryelectric.com for more information.

Powering the place they call home

April marks National Lineman Appreciation Day

HAVE YOU THOUGHT about what it takes to keep the lights on? Aside from the poles, wire and equipment, it's the people behind your power who are ready to answer the call.

Where you see a forecast calling for a storm, Horry Electric lineworkers see a call to action. They lace up their boots and prepare to leave their families as soon as the phone rings. They miss family dinners, their kid's birthday parties, Little League games and holidays to work in challenging conditions, sometimes through the night, to restore your power as quickly and safely as possible.

A lineman's readiness isn't accidental. It's a trait engrained in them from rigorous training, years of experience and a commitment to serving others. Lineworkers are passionate about restoring power to members not only because it's their job, but because Horry County is their home. They raise their families here. They go to church here and send their kids to local schools. They understand the service they provide is essential to the daily lives of members—local businesses, farms and neighbors who expect the lights to come on when they flip a switch.

Powering the communities they call home is deeply personal to them.

Electric cooperatives were built on the foundation of neighbors helping neighbors, and the lineworkers of Horry Electric embody that spirit every day. They're the first ones to respond and often work long hours to get the job done.

At times, serving our neighbors means helping beyond our service territory through a process known as mutual aid. This is where the cooperative principle of Cooperation Among



PHOTOS BY JENNIFER CUMMINGS

Advanced Line Technicians (from left) Jacob Riddei, Sean Brown, Justin Lewis (Serviceman) and Carluss King were recognized at the South Carolina State House in February. The ceremony was part of Co-op Day at the State House where legislators thanked lineworkers for the hard work they do.

Cooperatives comes into play. During major storms, Horry Electric crews are ready to assist sister co-ops, either in South Carolina or across state lines. For example, when Winter Storm Fern hit the upstate in January, an HEC crew and engineering personnel went to assist Blue Ridge Electric Cooperative in Pickens.

On the flip side, when extreme weather impacts Horry County, we have the ability to call on our sister co-ops to come to our aid, as they did during hurricanes Matthew, Florence and Dorian. This process strengthens the network of cooperatives, all for the benefit of the members we serve.

We understand losing power is inconvenient and frustrating, but we're always grateful for your patience. Linework is a demanding, physical and dangerous profession. Crews approach each job with a focus on safety and teamwork. They take pride in their trade and appreciate the trust members place in them.

We celebrate lineworkers every day, but April 13 marks Lineworker Appreciation Day while April 18 designates National Lineman Appreciation Day. We are truly thankful for their service and dedication. Their hard work, readiness and unwavering commitment to the communities we serve are the backbone of this cooperative.



A team from Horry Electric helped Blue Ridge Electric restore power following Winter Storm Fern. Personnel included (from left) Jeremy Smith, Franklin Williams, Blake Stevens, Will Suggs, Bryson Cooper, Collin Brown, Carluss King, Heath Hardwick and Bucky Jordan.

2025 Capital Credits

What does this mean and how does it affect you?

FOLLOWING THE SEVEN cooperative principles, Horry Electric allocates margins to members based on the cost of the electric service each member paid during the year. Because an electric cooperative is owned by its members, these margins are returned to members in the form of Capital Credits.

To determine the 2025 margin assignment, Horry Electric takes the total margins for 2025 and divides that amount by the total cost of electric service paid by all members during the year. This calculation provides the assignment factor.

Your total cost of electric service for the year is then multiplied by the assignment factor to determine your portion of the margins. This amount is assigned to your Capital Credit account, which grows based on each year you receive service from the cooperative.

Capital Credits are returned to members when the financial position of the cooperative allows and the Board of Trustees approves a retirement.

Capital Credit refunds were issued March 15 for members who had service during 2010 and/or 2024. Checks were issued for refunds \$100 or more and bill credits were issued to members for amounts of \$99.99 or less.

Please use the table below to help calculate your 2025 margin assignment.

If your 2025 electric bills totaled	\$1,000	\$1,500	\$2,000	\$2,500
The 2025 assignment factor is: (multiply the percentage times your bills)	6.59%	6.59%	6.59%	6.59%
Your Capital Credit assignment for 2025 would be:	\$65.90	\$98.85	\$131.80	\$164.75

Unclaimed Capital Credits posted online

HORRY ELECTRIC MAILS CAPITAL CREDIT checks to members who have received service in past years. Some of these checks are returned by the postal service as undeliverable. We hold these unclaimed funds for members and they can be found in a searchable database on horryelectric.com.



You can find the database by selecting Capital Credits from the Members tab on the home page or by using the search engine. In addition to the online database, Horry Electric publishes the unclaimed capital credit list in *The Horry Independent* on an annual basis.

In order to claim funds, contact Horry Electric at (843) 369-2211, Monday through Friday from 7:30 a.m. to 5 p.m. Please reference unclaimed capital credits as the reason for your call.

Returning to college? Scholarships for women available

It takes courage and vision to pursue a college degree as a working adult. Horry Electric offers an opportunity to female members who are taking that step.

The Jenny Ballard Opportunity Scholarship is for women who are resuming academic journeys that have been interrupted or delayed.

Sponsored by Women Involved in Rural Electrification (WIRE)—a service organization associated with South Carolina’s electric cooperatives—and named after one of WIRE’s founding members, the \$2,500 scholarship is based on need and personal goals.

The deadline to apply is June 1.

An online application for the 2026 WIRE

scholarship can be found at ecsc.org/wire. The scholarship will be awarded based on the information provided in the application.

Applicants for the program must:

- ▶ Be a member of Horry Electric or another South Carolina electric cooperative;
- ▶ Have graduated from high school or earned a GED at least 10 years ago;
- ▶ Obtain acceptance into an accredited college or university;
- ▶ Demonstrate financial need.

Recipients will receive scholarships for the fall 2026 or spring 2027 semester, with funds paid directly to the college or university.



Co-op equipment needs space

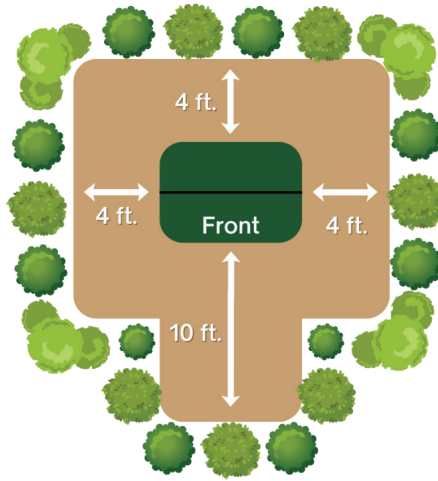
Overhead and underground requirements explained

YOUR HOME OR BUSINESS is powered by overhead or underground service. The electric co-op equipment serving you needs to be free from obstructions so power can flow through the lines and maintenance can be performed when necessary.

Horry Electric's vegetation management program ensures crews can safely access equipment to make repairs or upgrades. This means making sure vegetation such as trees, tree limbs and bushes are not growing near or into power lines and other equipment.

Overhead requirements

Trees and overhead power lines don't mix. Lightning, high winds, ice, heavy rains or extremely dry weather can cause a tree to fall, or limbs to come in contact with a power line. When this happens, our system is designed to respond. This is why members



experience a blink or an outage until the tree limb is cleared.

A 30-foot right-of-way (15-feet on each side) is required for overhead lines. If you're considering planting trees near overhead equipment, please choose the right tree for the right place (see graphic below). Don't plant any vegetation that exceeds 15 feet in height when fully grown within the "NO Tree Zone," which is 15 feet on each side of the power lines and poles. No vegetation should be planted within 10 feet of any overhead pole or wire.

Underground requirements

Crews need access to underground transformers and equipment 24 hours a

day, so it's important to remember:

- ▶ Keep vegetation obstructions well away from the transformer.
- ▶ Never place anything closer than 10 feet from the front, or 4 feet from the sides of the transformer.
- ▶ Never allow children to play near the transformer.

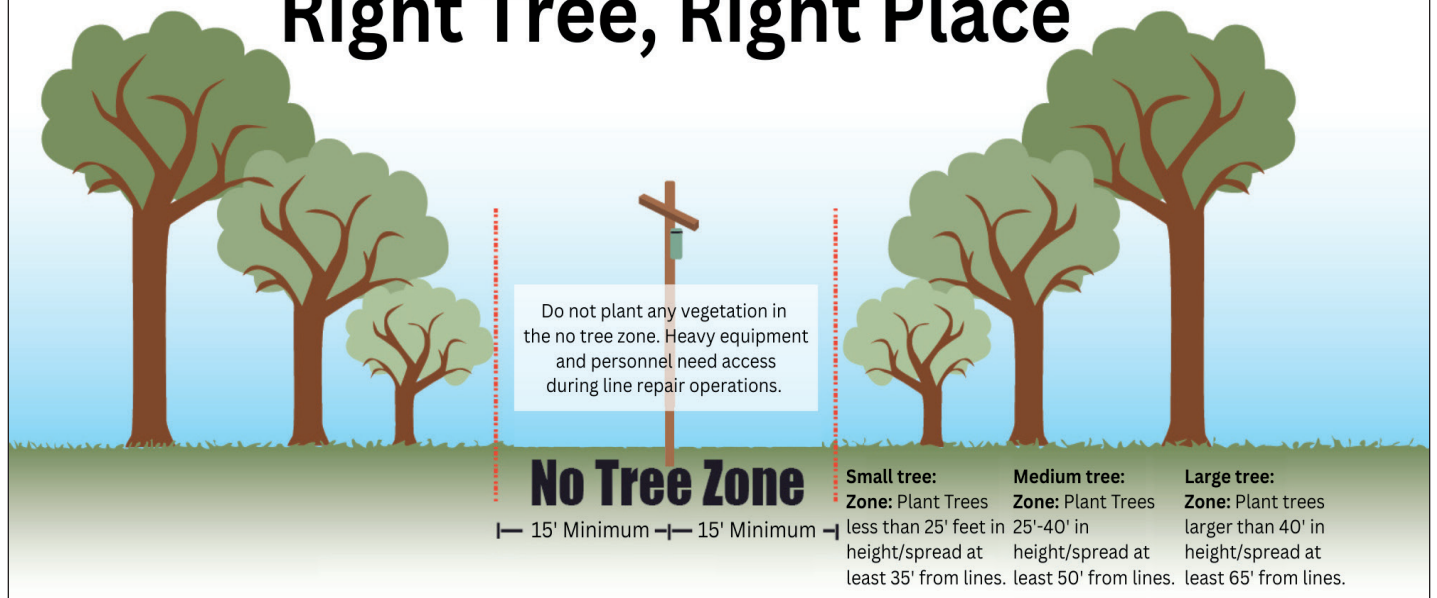
Landscaping tips

Horry Electric understands there is nothing pretty about underground transformers. However, there are some acceptable ways to landscape around them:

- ▶ Potted plants/planter boxes that two employees can pick up and move when needed.
- ▶ Benches are acceptable, if they can be picked up and moved.
- ▶ Rock/mulch island to surround the transformer.
- ▶ Statues and decorative lawn flags can be used.

EDITOR'S NOTE If you ever have questions regarding vegetation management or how to beautify the area around your transformer, contact our Vegetation Management department at (843) 369-2211 or visit horryelectric.com/vegetation-management.

Right Tree, Right Place



Power Pole Clutter

Flyers, satellite dishes, posters, basketball hoops, decorative lights, even hunting stands. You name it, someone has tried to staple, nail or tie it to a power pole. Here's a quick look at the dangers and pitfalls associated with unauthorized pole attachments.

Illegal

Many state and local laws and the National Electrical Safety Code prohibit any unauthorized items on poles.



Pole Damage

Even small holes can allow moisture and insects past the pole sealant, which can shorten the life of the pole or weaken it and cause it to fall in a storm.



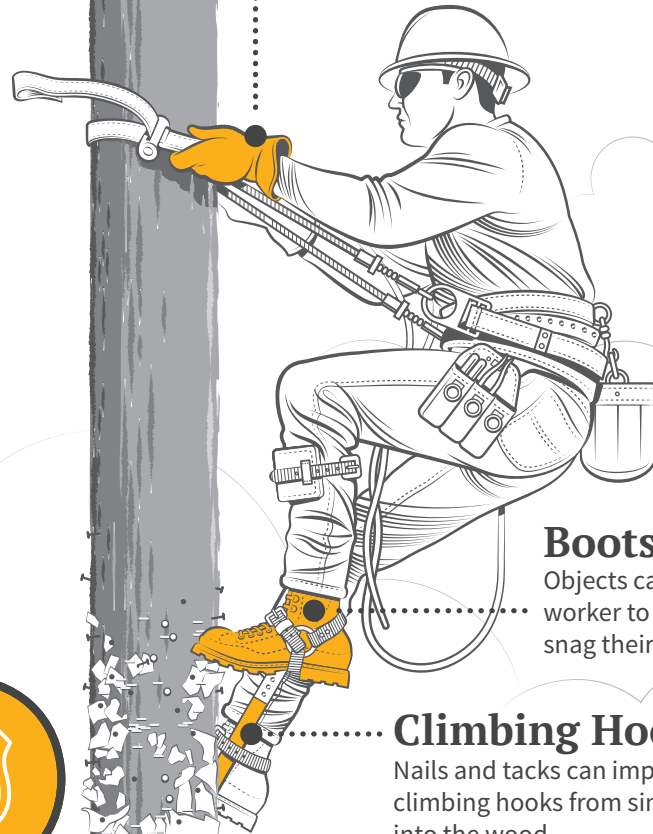
Hinders Repairs

Posters and flyers can hide identifying markers on poles and slow repair work.



Gloves

Staples, tacks and nails can puncture a lineworker's insulated rubber gloves and expose them to electric shock.



Boots

Objects can cause a worker to fall if they snag their boots.

Climbing Hooks

Nails and tacks can impede climbing hooks from sinking into the wood.

Dangerous

A person who gets too close to energized lines while attaching an object can be electrocuted.



Distraction

Some materials posted on poles, like mirrors or holiday decorations, can be distracting to drivers.

