

## Horry Electric Cooperative, Inc.

[www.horryelectric.com](http://www.horryelectric.com)

### MAIN OFFICE

P.O. Box 119  
Conway, SC 29528-0119  
(843) 369-2211

**TO REPORT  
POWER OUTAGES ONLY**  
(843) 369-2212

### BOARD OF TRUSTEES

Johnny M. Shelley  
*President*

Daniel B. Shelley, III  
*Executive Vice President and CEO*

Eugene Harriott Jr.  
*Vice President*

Ashley Anderson  
*Secretary/Treasurer*

Elaine D. Gore  
Bobby E. Jordan  
Franklin C. Blanton  
Ronald H. Floyd  
Henry W. Boyd  
Frederick 'Freddy' Thompkins

### CO-OP ATTORNEY

Kenneth R. Moss

### CO-OP NEWS EDITOR

Penelope D. Hinson  
[penelope.hinson@horryelectric.com](mailto:penelope.hinson@horryelectric.com)

### ASSISTANT EDITOR

Jennifer A. Harmon  
[jennifer.harmon@horryelectric.com](mailto:jennifer.harmon@horryelectric.com)

Horry Electric Cooperative, Inc., is an equal opportunity provider and employer.

Horry Electric Cooperative, Inc. is a non-profit, member-owned organization providing information and energy-related services on a fair and equitable basis.



A Touchstone Energy® Cooperative

## Save the date!

Annual Meeting is Tuesday, May 12



**DID YOU KNOW** every cooperative is required to conduct an Annual Meeting of its membership? The purpose is to hold the election for three positions of the board of trustees, share important financial information and participate in any other

business matters that may need to be addressed, including any necessary bylaw changes.

Please remember that only members who register in person to participate in the Annual Meeting between the hours of noon and 7 p.m. on Tuesday, May 12, are eligible to receive the Registration Gift, which is a \$20 electric bill credit.

The Annual Meeting is one of the best examples of how your membership matters. For us, it is an opportunity to report our status, share our progress and announce any plans that will have an impact on you and your co-op. We also get to meet members face-to-face rather than through voice, electronic or written communications.

For members, it's an opportunity to proactively participate in the business of YOUR COOPERATIVE. Very few organizations are uniquely positioned like Horry Electric to bring together people from all the different communities in Horry County.

### Please make a plan to come

We encourage members to come to the meeting and we try to make it as convenient and rewarding as possible. Horry Electric's bylaws require a quorum equal to five percent of the membership in order to conduct an official business meeting. With a preliminary estimate of 66,049 members on Annual Meeting Day, that means we'll need to have a minimum

of 3,302 members register. If we fail to meet quorum, then we won't be able to do business.

Registration gifts, entertainment and prize drawings for registered members have proven to be successful methods for co-ops to achieve their quorum requirement. On top of that, we have a Grand Prize Drawing at the end of the evening.

### Stay tuned, more to come

We don't have a lot of big changes planned for the 2020 Annual Meeting of Members with regard to logistics. Once again, we'll have the four different registration and voting areas on the campus of Coastal Carolina University. The business meeting and entertainment will take place at the HTC Center. Registration postcards will be mailed to members prior to the meeting, and you'll need to bring it plus a photo ID to take advantage of Speedy Pass lines at registration.

In addition to voting on the election of three trustee representatives, members will be voting on some important bylaw changes brought about as a result of changes made to the S.C. Code of Laws pertaining to electric cooperatives passed by the S.C. General Assembly last year. These changes will go into effect over the next several months. Bylaw changes are necessary in order for us to be in compliance with those changes.

The April edition of *South Carolina Living* will be your OFFICIAL GUIDE TO ANNUAL MEETING. It is also the OFFICIAL NOTICE of the meeting, so it will be mailed to all members.

*Daniel B. Shelley, III*

**DANIEL B. SHELLEY, III**  
Executive Vice President and CEO

# Bright Ideas grants reward teachers; apply by June 1



**TOUCHSTONE ENERGY** Cooperatives, such as Horry Electric, emphasize four core values including Innovation—and it's one we reward through the Bright Ideas grant program.

Also reflecting HEC's commitment to community, we've sponsored the Bright Ideas program for Horry County teachers, providing funding for innovative classroom-based education projects since 2007.

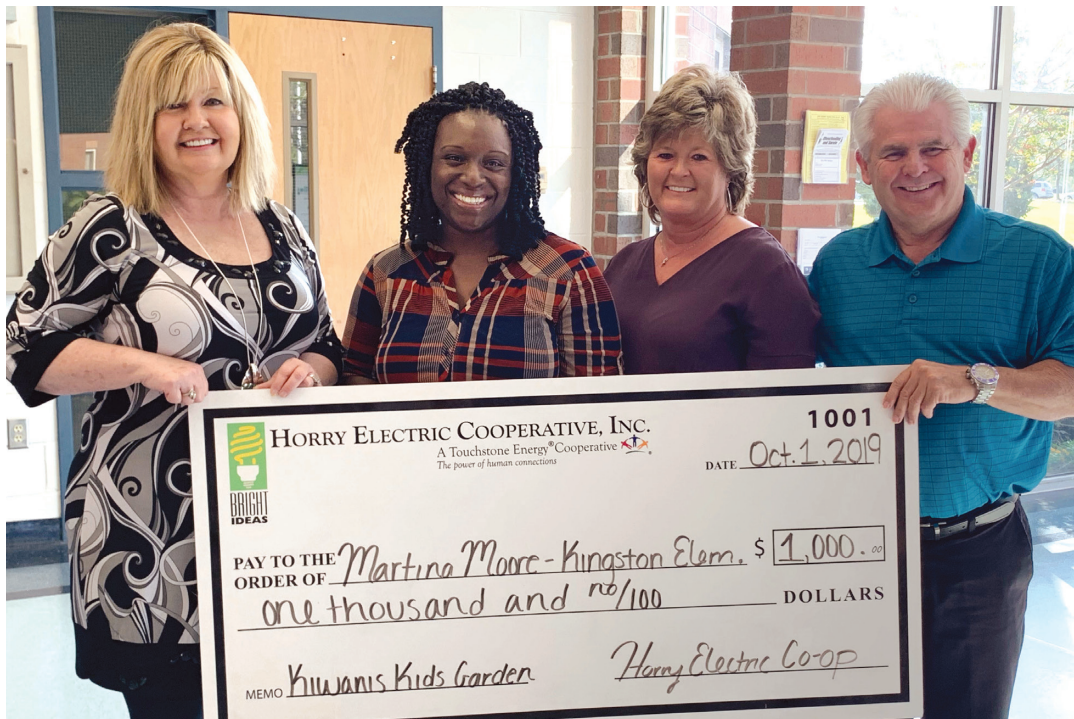
"It's so exciting! HEC loves giving back to our community and our schools," said Toni Gore, coordinator of the Bright Ideas program at Horry Electric.

In 2019, 12 teachers in nine different schools across the county were awarded grant money totaling \$10,000.

"It's rewarding to know that some of the classroom projects are just too much of an expense for one teacher to afford. To see the smile on their face when they receive the grant for something they've only dreamed of doing for the students, but couldn't due to lack of funds, is priceless," says Gore.

Bright Ideas grants are intended to

**Kay Sellers (center) receives a \$1,000 grant to improve and expand high school seating accommodations from HEC's Toni Gore (left), as Carolina Forest Principal Gaye Driggers helps hold the big check.**



**Martina Moore (second from left) receives a \$1,000 grant from HEC's Toni Gore (left) for her Kiwanis Kids Garden project. With them are Kingston Elementary Principal Dr. Dawn Brooks and Ken Richardson, Horry County school board chairman.**

fund projects outside normal public school funding parameters and can be made available to all disciplines in grades K-12 in Horry County. A school may submit an application, and teachers are limited to one application per year. \$1,000 is the maximum amount teachers

can apply for.

"We encourage any teacher in the district to apply! We would love the opportunity to help fund any project a teacher may want to do for their classroom," says Gore.

The application deadline for 2020 is June 1.

**Teachers, download a Bright Ideas application at [HorryElectric.com](http://HorryElectric.com). For program details, email [Toni.Gore@HorryElectric.com](mailto:Toni.Gore@HorryElectric.com).**



JENNIFER HARMON

## Unclaimed Capital Credits posted online

**HORRY ELECTRIC MAILS** capital credit checks to members who have received service in past years. Many of these checks are returned by the postal service. We hold them for those listed in a searchable database, which can be found on [horryelectric.com](http://horryelectric.com).

You can find the database by using the search engine on the page or by selecting Capital Credits from the My Co-op tab on the home page. In addition to the online database, Horry Electric publishes the unclaimed capital credit list in *The Horry Independent* on an annual basis.

**In order to claim funds, please contact Horry Electric Cooperative's main office in Conway between 8 a.m. and 5 p.m. weekdays at (843) 369-2211. Please reference your call as concerning unclaimed capital credits.**







Sarah Dixon, the 2020 Horry Electric Rural Lady of the Year, serves her community, family, farm and church in Aynor.

## Aynor's Dixon honored as Rural Lady of the Year

IT WAS A CELEBRATION of agriculture's past, present and future. Of women stepping in and stepping up.

At Horry Electric Cooperative's Rural Lady of the Year Luncheon on February 7, Sarah Dixon was honored with the Miss Leo G. Knauff Leadership Award for her years of contribution to the agricultural community. She shared the spotlight with the current Miss South Carolina Morgan Nichols, a granddaughter of a South Carolina farmer, who spoke about the importance of science, technology, engineering and math (STEM) and genetic influences on

Morgan Nichols, the reigning Miss South Carolina, entertained luncheon attendees and spoke about the importance of STEM education.

modern agriculture.

Dixon has embodied some of those STEM influences for the past 38 years as the matriarch of her family's 400-acre operation in Aynor. Dixon Farms grows soybeans, tobacco, sweet potatoes and corn. She serves as the farm's bookkeeper in addition to pulling the tobacco to and from the barns, cooking for the workers, and anything else the farm needs. Dixon is also there when she is needed by her family and community, whether taking care of her mother and mother-in-law when they were sick or leading her choir at St. Peter AME Church.

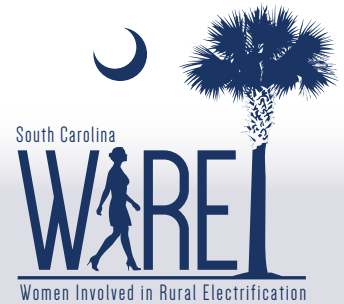
"Mrs. Dixon is a great example of what a person should be about," said Senator Kent Williams, who introduced a state senate resolution honoring Sarah Dixon in January, along with Representative Jeff Johnson. "She believes in giving back to the community, she believes in hard work, she loves people and she believes in service."

"I always try to do good for everybody," said Dixon, a mother of two and a grandmother of five. "Even when I was working at Conway Hospital and all the other places, that was my goal."

Established in 1979, the Rural Lady of the Year award reflects Horry Electric's deep roots in and continued appreciation of the county's farming culture. The award is named after Leo Knauff, an early home economist at Horry Electric.



JENNIFER HARMON



## Apply now for 2020 WIRE scholarships

**WOMEN RETURNING** to school to earn college degrees may now apply for financial assistance from the 2020 Jenny Ballard Opportunity Scholarship program.

Sponsored by Women Involved in Rural Electrification (WIRE), a service organization associated with South Carolina's not-for-profit electric cooperatives, the scholarship is a one-time award based on financial need and personal goals.

Application forms for the 2020 WIRE scholarship are available upon request at Horry Electric Cooperative and online at [SCLiving.coop/scholarship](http://SCLiving.coop/scholarship). Applicants for the program must:

- ▶ Be a member of a South Carolina electric cooperative.
- ▶ Have graduated from high school or earned a GED at least 10 years ago.
- ▶ Be accepted into an accredited S.C. college or university.
- ▶ Demonstrate financial need and clear academic goals.

The deadline for applications is June 1.

Recipients will receive scholarships for the Fall 2020 or Spring 2021 semester, with funds paid to the college or university.

Apply online at [ecsc.org/content/wire-scholarship](http://ecsc.org/content/wire-scholarship), by email to [peggy.dantzler@ecsc.org](mailto:peggy.dantzler@ecsc.org) or by mail to Peggy Dantzler, The Electric Cooperatives of S.C., Inc., 808 Knox Abbott Dr., Cayce, SC 29033.



## Get ready to RODEO!

**THE SECOND ANNUAL** South Carolina Lineman's Rodeo is quickly approaching! The rodeo is being held at Horry Electric Cooperative in Conway on Saturday, March 21.

There's a lot of preparing that goes into an event like this, including: site planning, parking and more. Judges are getting everything together to evaluate linemen events. The linemen are separated into two divisions: Apprentices and Journeyman teams, each having their own events to practice for.

### Statewide preparation

The Lineman's Rodeo is put on by The Electric Cooperatives of South Carolina, Inc., the state association for HEC and other co-ops. Horry Electric is helping plan for everything on site. The first planning meeting was held in August 2019.

Horry Electric's Chris Teems, manager of special services, is helping coordinate the logistics.

"I've been helping with getting local vendors, getting the site prepared, planning for food, and coming up with a layout for the vendors," says Teems.

### A judge's perspective

Each event has a set of judges, a Chief Judge, and a division Master Judge.

Advanced Lineman Sean Brown is serving as a Chief Judge.

As part of preparing, Brown is responsible for writing an online description of his event (Crossarm Lift, Knots, and Wire Ties). This event requires linemen to lift a double crossarm to the top of a pole, bring it back down, then tie two knots and two ties.

Brown says while it's a competition, it's also for the families. "Being a Chief Judge, I tell my judges we're not nitpicking these competitors for every little thing in front of their families," says Brown.

### A rookie and veteran apprentice

Tucker Barnes, a groundworker/line technician, is a first time participant after starting at the co-op in June.

Justin Cummings is a B-Class lineman and second year competitor. He says you have to get in the right mindset. "If you go into it thinking it's going to be fun and easy, that's not the case. It's something you need to put a lot of time and effort into."

The Apprentices compete solo in four events, so practice is a must. Depending on work load, the linemen practice a few times a week, plus weekends, if needed.

There's also a written test. "I do pretty well on memorization, so I'm going to read the Safety Manual to prepare," says Barnes.

**Hunter Gardner, second year apprentice competitor, practices for the obstacle course event.**



Horry Electric's Journeyman Team (from left) Chase Cox, Matt Savage and Wyman Boatwright strike a pose. Note: This is NOT traditional lineman practice, but they don't want to give away any of their trade secrets before the rodeo.

### The Journeyman Team

In order to compete in the Journeyman division, you have to have three linemen with at least four years' experience. Two are climbers, one is a ground man.

Advanced Lineman Matt Savage is the ground man. A-Class Linemen Chase Cox and Wyman Boatwright are climbers.

Some might ask what makes the Journeyman Team different. "It's just more advanced line work. You're doing more in-depth work, with a lot more steps," says Cox.

Another major difference is being on a team, rather than competing alone. It all comes down to communication.

"As the ground man, it's my job to worry about what the other two are doing, their next step, plus my next step," says Savage.

### A great family event

"We'd love to see everyone out here. It's a really good family event. It shows people what we do during storms and everything," says Savage.

"It's going to be a special event this year because it's located in our hometown, so I encourage everyone to come out and see what lineworkers do," says Cummings.

"The rodeo is not only a competition, but it helps competitors with job knowledge and building working relationships among the co-ops. The Lineman's Rodeo allows us to fellowship together in a fun, family day," says Burroughs Nobles, manager of operations.



JENNIFER HARMON



# How about some 'homegrown' renewable energy?

**TO MAKE SOLAR** energy more accessible to members, Horry Electric Cooperative made Community Solar available three years ago. Many members jumped at the chance to purchase locally generated renewable energy—and you can, too!

Community Solar lets you share in the benefits of solar without having to really do anything! We've done all the work.

Horry Electric built a 240-kilowatt (KW) Community Solar farm across the street from our Conway office on Cultra Road. All eligible Horry Electric residential members have the opportunity to purchase a maximum of five shares of solar power from the farm. It's a terrific option for members.

## Community Solar advantages

- ▶ It's hassle free. No holes in your roof. No system to set up and maintain.
- ▶ The Cooperative assumes all liabilities and maintenance on the solar system.
- ▶ No solar panel cleaning.
- ▶ No safety concerns.
- ▶ No burdensome homeowner association restrictions.
- ▶ Subscriptions are transferable from location to location with the member.
- ▶ Community Solar creates clean energy that is environmentally friendly.

## How it works

Decide how many blocks of solar power are right for you. If you'd like more Community Solar later and it is available, you can select additional blocks.

Complete the subscription agreement. Then, pay the non-refundable upfront charge of \$100 per block subscribed. You have the option of subscribing from one to five blocks at the monthly price of \$25 per block.

Start receiving solar-energy credits on your monthly electric bill. Each month, you will receive credit for a portion of the production from the Community Solar farm. Your portion is based on how many solar blocks you have selected.

## Pricing

Non-refundable  
upfront charge—**\$100 per block**  
Monthly charge—**\$25 per block**  
Monthly credit—  
**Average of 150 kWh**

## How much do I need?

The average residential member uses approximately 1,200 kWh per month.

Please note: These figures are only averages; solar energy production will fluctuate month to month based on weather and time of year.

**Ready to sign up? Just call us at (843) 369-2211 and ask about Horry Electric Community Solar! Visit [HorryElectric.com](http://HorryElectric.com) to download a Community Solar FAQ sheet and a Community Solar Agreement.**



JENNIFER HARMON

HEC energy advisors (from left) Eddy Blackburn, Garrett Gasque, and Ricky Lowder.

## Trusted Energy Advisors encourage action

**UNPREDICTABLE TEMPERATURES** this past winter could carry over into the spring and summer seasons. As temperatures start to climb, Horry Electric needs your help to Beat the Peak. Peak times happen early in the morning during the winter or late in the afternoon in the summer when members are going to be using lots of power.

This is a voluntary program for members, but joining means you can help prevent a heavy load on our system. How? When an abundance of members use power during these peak times, it puts a heavy demand on our system. This means we're paying more money to provide power.

Our Trusted Energy Advisors want to remind you the recommended temperature to keep your thermostat on is 68 degrees in the winter and 78 in the summer.

When you sign up to Beat the Peak, you can choose to be notified about a peak time via call, text or email. There are several ways you can Beat the Peak:

- ▶ Lower your thermostat three degrees.
- ▶ Wash clothes in cold water, if you have to do laundry during the peak time.
- ▶ Postpone taking a hot shower.
- ▶ Turn OFF any unused lights.

Our Trusted Energy Advisors have put together more tips for you. Just search for Horry Electric Cooperative, Inc. on Vimeo and YouTube for their advice.

You can visit our website, [horryelectric.com](http://horryelectric.com), to sign up and help us Beat the Peak.



A bird's eye view of the Community Solar farm across the street from Horry Electric's Conway office.



VAN OGCAN

# 'I need space!'

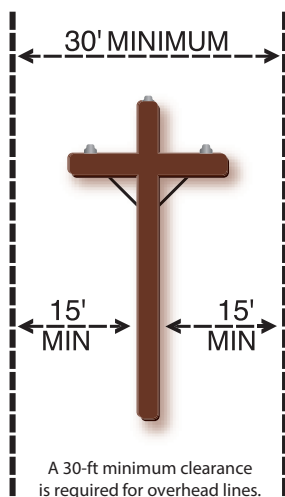
If co-op equipment could talk ...

**NOTHING PERSONAL** but we all need a little space sometimes, right?

If co-op equipment could talk, we imagine its go-to break-up line would be: "Really, it's not you—it's me! Sometimes I hurt anyone who gets too close—hurt them bad!"

But seriously, folks, co-op equipment—be it overhead, underground or attached to your home or business—needs space to do its job. It's all about Safety and Reliability.

In fact, that's the name of the section of the Storm Central page at [HorryElectric.com](http://HorryElectric.com) that outlines space requirements for overhead and underground service. Click on Storm Central, then Safety and Reliability to get the 411 on 811 and more. But, to save you some heartache, here's the lowdown, in a nutshell.



## Overhead: Help us help you

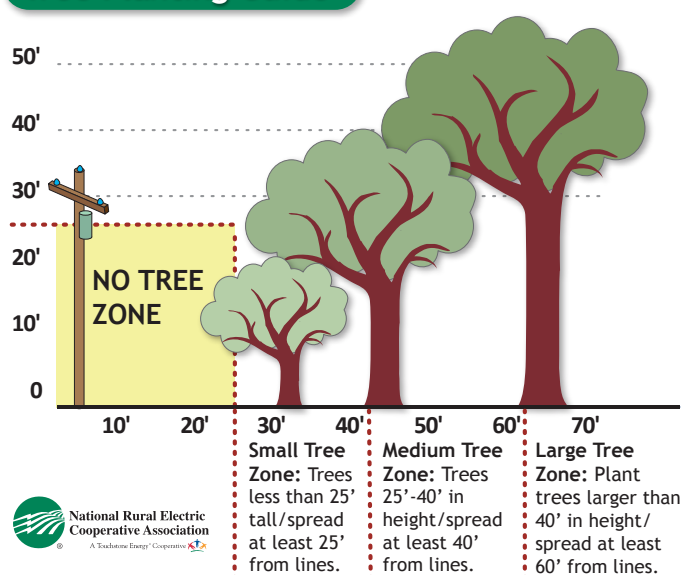
HEC's proactive tree-trimming program helps reduce the potential for outages. However, keeping up with tree growth in Horry County is a challenge. We need your help. If you're considering planting trees near our overhead equipment this spring, please choose the right tree for the right place. The graphic, above right, offers guidance. Our website also links to the handy South Carolina Urban Tree Species Guide.

Remember: We reserve the right to trim trees within the 30-foot right-of-way near our overhead lines.



When he saw the photo at left, HEC Right-of-Way Coordinator Buddy Parker said, "I know right where that is! We have to give those trees a flat-top about every year!" Don't plant in the No Tree Zone, Parker reminds members. See below.

## Tree Planting Guide



## HEC SOCIAL MEDIA

Get more: Energy tips

## Underground: Keep your distance

Call before you dig! If you're planning a home improvement job, planting a tree or installing a fence or deck, call 811 first! Use this toll-free hotline to have underground utilities on your property located, free of charge.

Our underground transformer boxes—sometimes called "green boxes"—are something to steer clear of if you have one on your property, please Keep Your Distance! as our downloadable online brochure underscores.

Keep areas to the sides of and behind the transformer clear to four feet and in front clear to 10 feet. The Underground Service page at our website also answers frequently asked questions about landscaping around transformers.



Now, folks, bear in mind: Space is healthy and being alone does not mean that you have to be lonely—especially if you are a green box. Like co-op poles and lines, they need space!

SUMMER	WINTER
<b>PLANT ENERGY SAVINGS</b>	Plant deciduous trees to block heat from the sun in the summer and let sunlight in during the winter.

Follow Horry Electric on Facebook—or Instagram or Twitter—and you just might pick up some spring planting tips that will grow into energy savings!