

Horry Electric Cooperative, Inc.

www.horryelectric.com

Main Office

P.O. Box 119
Conway, SC 29528-0119
369-2211



(to report power outages only)

369-2212

Board of Trustees

Johnny M. Shelley
President

James P. "Pat" Howle
Executive Vice President and CEO

Eugene Harriott, Jr.
Vice President

Ashley Anderson
Secretary/Treasurer

Elaine D. Gore
Bobby E. Jordan
Franklin C. Blanton
Ronald H. Floyd
Henry W. Boyd
Frederick 'Freddy' Thompkins

Co-op Connection Editor

Penelope D. Hinson
penelope.hinson@horryelectric.com

Horry Electric Cooperative, Inc., is an equal opportunity provider and employer.

Horry Electric Cooperative, Inc. is a non-profit, member-owned organization providing information and energy-related services on a fair and equitable basis.



A Touchstone Energy® Cooperative

Giving thanks for your support —especially in one important way

THE COOPERATIVE DIFFERENCE. If you've been plugged in to our social media channels or have read the magazine over the past few years, you've heard us talk about The Cooperative Difference.



In a nutshell, The Cooperative Difference is made up of the things that make cooperatives different from all other utilities out

there. Democratic Member Control and Member Economic Participation are two of the biggest things that set us apart, but there's much more to it than that. And, it isn't all one-sided.

Everything we do at Horry Electric is tied directly to the impact we believe it has or will have on our members. From right-of-way clearing to the full menu of programs and services we make available to members, our first question is always—what difference will this make in the lives of our members.

The relationship between electric cooperatives and the people they serve is truly unique. We think it's extra special at Horry Electric Cooperative. And, we thank you for that. Our members are second to none.

We are thankful that our members are truly connected and engaged with our electric cooperative. Whether it is attending our Annual Meeting, reading *South Carolina Living*, liking and following us through our various social media outlets, accessing our web site or logging in to MyEnergy Online, Horry Electric members are interacting with their cooperative.

When we launched the Beat the Peak program this past summer, we hoped members would take action and sign up for the alerts and notifications to cut back on energy

Horry Extra

Holiday meaning in a nutshell

Maple Baptist Church's sixth annual Nativities Exhibition, Dec. 1-3, will feature 200 nativities—from life-size to acorn-small. Turn to page 20B in this month's Horry Extra section for details.



use during peak times. Member response has been incredible. On October 13, we held a drawing of members who had signed up for the program and awarded a \$100 electric bill credit to Mr. Lawrence Salmon of Myrtle Beach. As of the writing of my column this month, there are



Lawrence Salmon

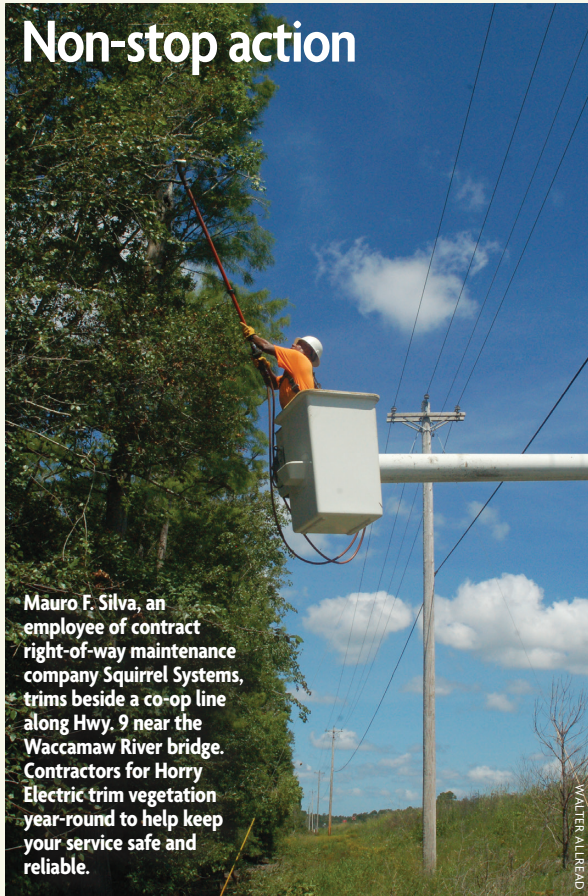
more than 5,500 subscriptions to the program. We hope it will continue to grow. Together, we really can make a difference in the demand for electricity during peak times. We can't do it without member participation. It's one of the most important program offers we've ever launched to our members.

As 2017 draws to a close and we prepare for 2018, I want to thank you for the support you have shown your cooperative and its employees. We love what we do and care deeply about our members and our community.

Please stay tuned! 2018 is going to be another great year!

James P. "Pat" Howle
Executive Vice President and CEO

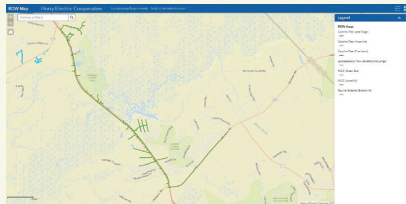
Non-stop action



Mauro F. Silva, an employee of contract right-of-way maintenance company Squirrel Systems, trims beside a co-op line along Hwy. 9 near the Waccamaw River bridge. Contractors for Horry Electric trim vegetation year-round to help keep your service safe and reliable.

WALTER ALBRECHT

Where are crews trimming? Zoom in on the ROW Map at HorryElectric.com to see. It's color-coded by contract company. This close-up shows where Squirrel Systems is working.



This close-up shows where Squirrel Systems is working.

Do you have special medical needs?

MEMBERS WHO have a health problem requiring the use of special, electric-powered medical equipment should contact Horry Electric ASAP. Many need to obtain a Special Medical Needs Account Member Certification form.

Residential members with such conditions will be required to secure the signature of a licensed health care provider on the form and then return it to the co-op. The certification is valid for 91 days from the date of the signature of the health care provider. It is the member's responsibility to renew certification by obtaining the appropriate signatures on a new certification form and submitting it to the co-op. Details: (843) 369-2211.

H₂O Load Management Program

Receive a one-time \$50 electric bill credit for helping us take a load off!

Help control the future cost of power by reducing the demand for electricity in your home during peak hours. Members will receive a one-time \$50 electric bill credit from Horry Electric for each load management switch installed on qualifying water heaters* in your home.

Visit our website for complete details, www.horryelectric.com or call 843-369-2211.



* Water heaters must be a minimum 50 gallon capacity; electric; 5 years old (or less) and meet the ASHRAE Standard 90 or NAES.

Switches must be installed by an Horry Electric approved contractor.

It's like a shower of money!

Receive up to a **\$250** rebate when you install a new electric water heater*.

It's easy!

Members of Horry Electric Cooperative who replace or install a new **50-gallon (minimum) electric water heater will receive a \$125 rebate.**

If you replace or install a new **80-gallon (minimum) electric water heater, you will receive a \$250 rebate.**

For details, visit www.horryelectric.com or call **843-369-2211**

*Water heater must meet minimum efficiency standards.

Making the Season Brighter



The holiday season is one of the most treasured times of the year, one in which we can depend on the fellowship, support and comfort of our friends and family. That same sort of reliability is also one of the core values of Horry Electric Cooperative, and we want our members to always know we are here to bring warmth, safety and service to you and your loved ones not only now—but throughout the entire year.

Merry Christmas from all of us at...

**Horry Electric
Cooperative, Inc.**

843-369-2211

A Touchstone Energy® Cooperative 

www.horryelectric.com



Horry Electric will be closed November 23–24,
December 25–26 and January 1 for the holidays.

Exhibit features nativities from around world

OVER 200 NATIVITY scenes from around the world—and from local collections—will be featured at Maple Baptist Church's sixth annual Nativities Exhibition, Friday, December 1 through Sunday, December 3.

Many are from the collection of Martha Ann Johnson, a member of the church and of Horry Electric Cooperative. The exhibition is a labor of love for Johnson, who was HEC's Rural Lady of the Year for 2011. An avid collector and creator of nativities, she helped start the annual event and has been a Best in Show winner in past years. Johnson will be the featured collector this year, and the event will offer visitors a last glimpse at some of her creations. She plans to pass many of her handmade nativity ornaments to her grandchildren at Christmas.

"I work on nativities year-round," she says. She started collecting when she was married in 1960. "My mother had a plastic set when I was growing up that may have cost all of 29 cents, and now I have one just like it that is one of my most cherished sets."

Friends who travel buy them and give them to her. One section of the exhibit features tiny nativities. As Johnson notes, "Some of the finest and most precious ones that the people



Martha Ann Johnson with a few of the pieces to be featured at the sixth annual Nativity Exhibition December 1-3 at Maple Baptist Church, 4500 Hwy. 65, Conway. A tiny nativity (inset) inside a real acorn fits in her palm. The church's reception hall (right) is filled with nativities. Look closely and you'll find special characters like the three African wise men (below, right).

value the most are the little ones."

Other Maple members loan their nativities for the exhibition, including one that was set in an actual eggshell by a family friend.

Large or small, from lands near and far, the nativities all remind us of the blessed event celebrated each Christmas:

For unto you is born this day in the city of David a Savior, who is Christ the Lord."

—Luke 2:11 (ESV)

Nativities Exhibition hours and details (including pizza and BBQ plates!)

Admission is free all three days. Donations are accepted. Here are details and a few highlights:

Friday, December 1—2 to 8 p.m., with pizza by the slice* available from 5:30-7 for \$2 a slice.

Saturday, December 2—11 a.m. to 5 p.m. with a family photo opportunity from 1 to 4 p.m. Nativity costumes for children and adults available.

Sunday, December 3—12 noon to 4 p.m., with BBQ plates* to go (\$10) from noon to 1 p.m.



*To pre-order a whole pizza or buy BBQ plates, call (843) 365-2627 or email MapleBaptist@yahoo.com. Pizzas and BBQ plates are only available by pre-purchase. Snacks and goodies will be available each day at the church, 4500 Hwy. 65, Conway.





From around the globe—and their creators' imaginations—depictions of Christ's birth will be on view Dec. 1-3 at Maple Baptist Church during the Nativities Exhibition. The Eskimo-themed scene (above) and most examples here are from Martha Ann Johnson's collection of miniatures, including a nativity from Peru (above right). From the collection of Maple members Fran and David Long comes a special one from Honduras (left) made of straw. Weather permitting, a live nativity (below) will be featured outside the church.

MARY HARDWICK



MARY HARDWICK



PHOTOS ON THIS SIDE BY WALTER ALLREAD

How to become a trustee of Horry Electric Cooperative, Inc.

I. QUALIFICATIONS:

Below are the qualifications that must be met before a person can be elected to the Cooperative's Board of Trustees:

A. Must be a member in good standing with the Cooperative and receive electrical service from the Cooperative at his or her primary abode.

B. Must reside in the Trustee District from which Trustee is to be elected.

C. Shall not be a close relative of an incumbent board member, or of an existing employee of the Cooperative, or is employed by the Cooperative, or was employed by the Cooperative at any time during the preceding five (5) years.

D. Must not be employed by or financially interested in a competing enterprise, or a business selling electric energy or supplies to the Cooperative, or a business primarily engaged in selling electrical or plumbing appliances, fixtures, supplies or wiring to, among others, the members of the Cooperative.

II. NOMINATIONS:

Below are the two methods that may be used to become nominated for the purpose of being elected as a member of the Cooperative's Board of Trustees.

A. A member may be nominated by the appointed Nominating Committee of the Cooperative as a candidate for the Board of Trustees from the

Trustee District in which the member lives and for that District's seat. The Nominating Committee will meet in January prior to the Annual Meeting held in May. For the exact date of the Nominating Committee meeting, call the office at (843) 369-2211.

B. A member can also be nominated by petition as a candidate for the Board of Trustees from the Trustee District in which the member lives and for that District's seat. Official forms must be obtained from the Cooperative

and must be signed by any twenty-five or more active members/owners in order to be considered valid. The deadline for petition candidates is sixty days prior to the date of the Annual Meeting of Members.

III. ELECTION:

The following is how the election will take place at the Annual Meeting:

All members who have been nominated by the Nominating Committee or who have been nominated by petition will have their

names appear on the official ballot of the Cooperative. The members who are in attendance at the Annual Meeting will then select their representative to the Board of Trustees by secret ballot. If a member has been properly nominated and has no opposition, that member may be voted to the Board of Trustees by acclamation. ☺

For additional information on this procedure, please refer to the Cooperative's Bylaws, which are posted on horryelectric.com. For a printed copy of the Bylaws, just drop by our office.

Your Annual Meeting date is Tuesday, May 8, 2018 Coastal Carolina University Campus

Time Schedule

ITEM	BYLAW PROVISIONS	ACTION
Nominating Committee Appointed:	Not less than one hundred twenty (120) days (1/7/18) nor more than one hundred fifty (150) days (12/8/17) prior to meeting of members, consisting of five (5) members.	To be appointed at December 2017 Board Meeting. Nominating Committee to meet in January 2018.
Notice of Meeting of Nominating Committee in local newspaper:	RUS requirement (No Bylaw provision).	Published in a local newspaper January 2017/January 2018.
Posting of Report of Nominating Committee:	Nominees: At least ninety (90) days before Annual Meeting.	Post before 2/6/18.
Deadline for Petition Candidates and posting of report:	Not less than sixty (60) days prior to meeting of members.	Deadline for Petition Candidates: 3/7/18 (Wed.) <u>at Noon</u> . Post in office by 3/8/18 (Thurs.).
Credentials and Elections Committee Appointment:	At least ten (10) days—by (4/28/18) before any meeting of the members, and consisting of at least nine (9) members.	To be appointed at March 2018 Board Meeting.
Notice of Meeting: <div>With names and addresses of all nominees, distinguishing between those nominated by the Committee and those nominated by petition.</div>	Not less than ten (10) days (4/28/18) nor more than twenty-five (25) days (4/13/18) before the date of the meeting.	Direct mailers to all consumer/owners between 4/13/18 and 4/28/18.

Horry Electric Cooperative, Inc.; P.O. Box 119; Conway, SC 29528-0119; (843) 369-2211