

## Horry Electric Cooperative, Inc.

[www.horryelectric.com](http://www.horryelectric.com)

### Main Office

P.O. Box 119  
Conway, SC 29528-0119  
369-2211



(to report power outages only)

369-2212

### Board of Trustees

Johnny M. Shelley  
*President*

James P. "Pat" Howle  
*Executive Vice President and CEO*

Eugene Harriott, Jr.  
*Vice President*

Ashley Anderson  
*Secretary/Treasurer*

Elaine D. Gore

Bobby E. Jordan

Franklin C. Blanton

Ronald H. Floyd

Henry W. Boyd

Frederick 'Freddy' Thompkins

### Co-op Connection Editor

Penelope D. Hinson  
[penelope.hinson@horryelectric.com](mailto:penelope.hinson@horryelectric.com)

**Horry Electric Cooperative, Inc., is an equal opportunity provider and employer.**

**Horry Electric Cooperative, Inc. is a non-profit, member-owned organization providing information and energy-related services on a fair and equitable basis.**



A Touchstone Energy® Cooperative

## This holiday season, remember that your co-op cares

**THE HOLIDAYS** bring to mind happy memories of seasons past, good food (and expanded waistlines!), great family and long-awaited gifts. They also bring thoughts of giving back, spreading love and sharing joy.



We here at Horry Electric strive to share our holiday spirit with you. And, as always, we seek to provide you with convenient, useful services. For instance, we help you save driving time by providing the option to pay your bill by using our free Mobile App or Mobile Web App. Look for the Horry Electric name in the App Store or Android Market.

Another great benefit we offer is the Co-op Connections discount card. Before you start shopping, I highly recommend checking out the coupons offered at [Connections.coop](http://Connections.coop), which is just a click away through the link atop the [HorryElectric.com](http://HorryElectric.com) home page. You could save on everything, from the gifts you place under the tree to your holiday ham!

We show how much we care by giving back to our community, like through our Operation Round Up program. Participating members round up their bill to the next dollar. A volunteer trust board administers the collected funds, ensuring that funds go to deserving local people. With Operation Round Up, members and co-op join together to make what we call the Cooperative Difference.

We are nothing without our members. We understand that we cannot thrive unless you thrive, so we do all we can to make sure our community is strong.

We at Horry Electric Cooperative hope you have a happy holiday season!

**James P. "Pat" Howle**  
*Executive Vice President and CEO*

### Tip for a safe Christmas: Inspect seasonal items

Horry Electric Cooperative can't guarantee that the hustle and bustle of the holidays won't leave you with a few frayed nerves, but we can certainly help you avoid frayed wires.

Specifically, many of us have treasured holiday mementos that we bring out of storage and proudly display every year. These items might lack modern safety features. Take a few moments to carefully inspect them to ensure everything is in safe, working order. Look out for:

- ▶ Brittle insulation on wires
- ▶ Rodent damage to wires
- ▶ Frayed wires, especially at stress points
- ▶ Worn switches that could short circuit
- ▶ Corroded metal parts
- ▶ Unstable bases and other tip-over hazards.

Let's make it a season of joy—and of safety!



**Check to make sure connections are secure, and cords are not worn or frayed.**

## S.C. flooding underscores need for readiness

**AS THE HISTORIC RAINFALL** and subsequent flooding that devastated other parts of South Carolina in early October showed, major outages can happen at any time.

We're always prepared at Horry Electric Cooperative. Are you?

To stay ready, access our Storm Central page at [HorryElectric.com](http://HorryElectric.com).

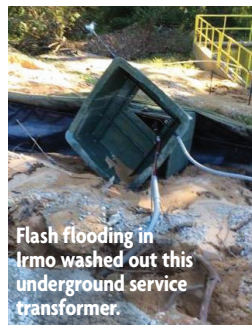
There, among other things, you'll learn how power is restored, and priorities are set. The website has the details, but, basically, our goal is to restore service to as many consumers as rapidly and safely as possible. As a rule of thumb, power is usually restored in this order: transmission circuits, substations, distribution lines and individual structures.

And here's a key lesson from Storm Central's Outage FAQs that always applies, rain or shine: "If you see a downed power line, STAY AWAY!"

### Lessons from the storm

In the service areas of some of our sister co-ops around South Carolina, the storm underscored how underground facilities are not outage-proof. As the Power Outage FAQs at Storm Central note, "Underground lines ... may present restoration challenges when flooding is involved. It also takes a longer amount of time and specialized equipment to find problems with underground cable."

Another takeaway: Always check HEC's Facebook page for real-time updates. For the October storm, we updated members via Facebook with posts from local media and emergency agencies, including reports of projected flooding along the Waccamaw River and information about how to get help, if needed, from FEMA.



Flash flooding in Irmo washed out this underground service transformer.

COURTESY MID-CAROLINA ELECTRIC CO-OP

### Do you have special medical needs? If so, let us know!

We're also reminding members who have a health problem requiring the use of special, electric-powered medical equipment to contact us ASAP. Many need to obtain a Special Medical Needs Account Member Certification form.

Residential members with such conditions will be required to secure the signature of a licensed health-care provider on the form and then return it to the co-op. The certification is valid for 91 days from the date of the signature of the health-care provider. It is the member's responsibility to renew certification by obtaining the appropriate signatures on a new certification form and submitting it to the co-op. For details, call HEC at (843) 369-2211.

### We're 'powerless' without your help!

Finally, for any outage or emergency related to your Horry Electric service, call our PowerTouch number, (843) 369-2212. PowerTouch is tied to the mapping and customers' information systems at HEC, which allows the co-op to pinpoint the location of problems on the system.

Your telephone is a vital connection to your co-op. The number you provide should be for the phone at the service location for which you might be reporting an outage or other problem with your service. Help us keep our records up to date, so, if there is a problem, we can use PowerTouch to get your power restored ASAP. Call our regular number, (843) 369-2211, to update us if necessary.



### Co-op Connections® Card

Horry Electric Cooperative, Inc.

A Touchstone Energy® Cooperative



## Could you use a Shopping Assistant for the holidays?

**YOUR CO-OP CONNECTIONS** discount card from HEC comes with a Cash Back Mall Shopping Assistant that allows members to earn cash back on purchases of more than 300,000,000 products from more than 5,000 leading online merchants. Using it is as easy as 1-2-3:



1. Visit HEC's Co-op Connections page through the link at [HorryElectric.com](http://HorryElectric.com).

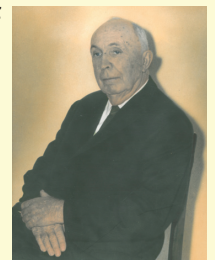
2. Download and use the free Shopping Assistant for your browser or, if you're on the go, visit the App Store or Google Play to download the free mobile version of the Shopping Assistant. Search "Touchstone Shopping Assistant" in either app store.

3. Shop directly from the same sites you're already visiting—and save more with Co-op Connections!

### HorryExtra

#### Thankful for those who got us here

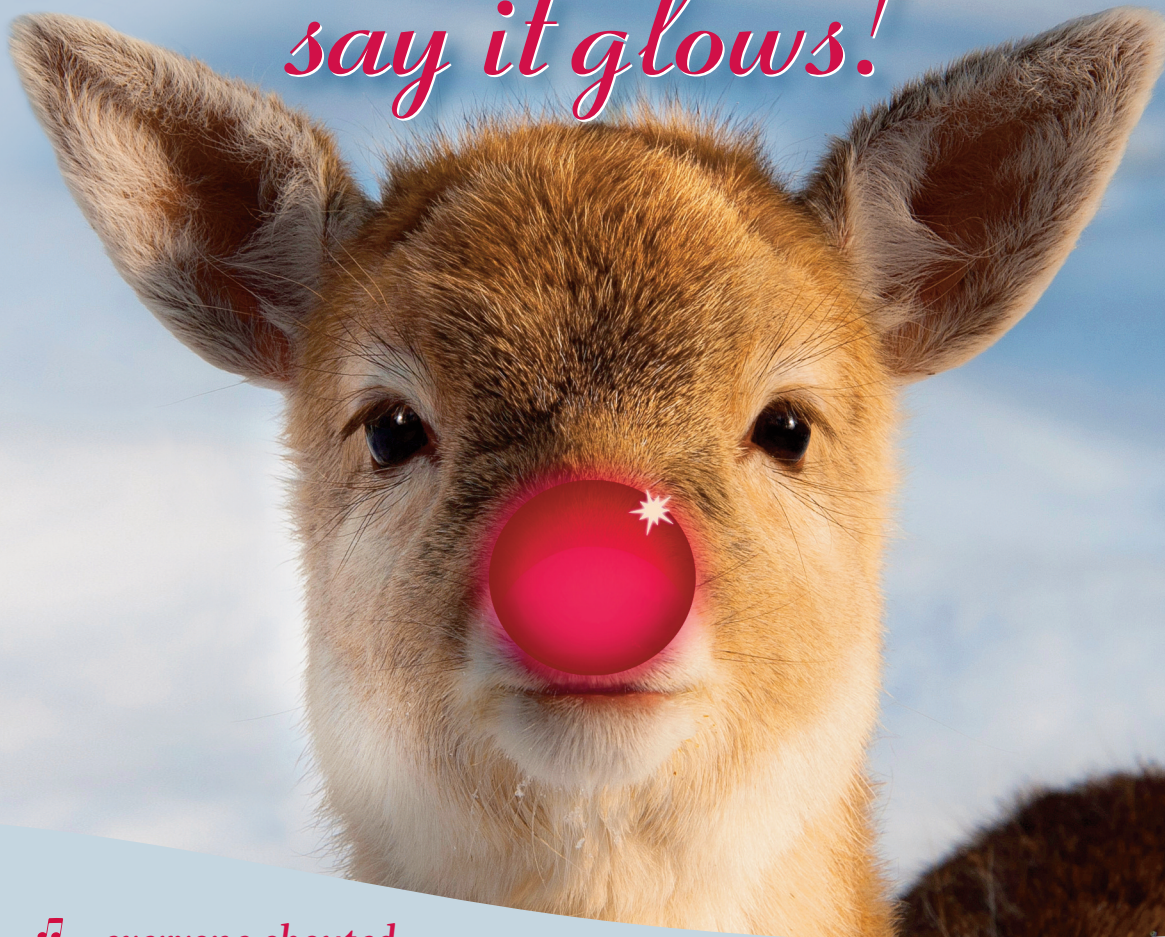
More than 75 years ago, Mildred Perritt of Galivants Ferry watched as her grandfather, U.A. Johnson (right), and father, Lee Johnson, helped organize Horry Electric Cooperative. "Daddy and Granddaddy ... went everywhere trying



to get people to sign up for it," she said. Their story is on page 20B in this month's Horry Extra section.



*You would even  
say it glows!*



*♪...everyone shouted  
out with glee...that even Rudolph is  
saving energy and money...by switching to LEDs. ♪*

As you welcome friends and family into your home this holiday season, use energy more wisely. From switching to CFLs and LED lights, to keeping your thermostat at 68 degrees and checking insulation, your home can be a warm—and energy-efficient—place for the holidays! For more energy-saving advice visit [TouchstoneEnergy.com](http://TouchstoneEnergy.com).

**Horry Electric  
Cooperative, Inc.**

A Touchstone Energy® Cooperative



Wishing you and your family a very

*Merry Christmas!*

843-369-2211

[www.horryelectric.com](http://www.horryelectric.com)



**HORRY ELECTRIC WILL BE CLOSED NOVEMBER 26–27,  
DECEMBER 24 AT 1 P.M., 25 & 28 AND JANUARY 1 FOR THE HOLIDAYS.**



## “Daddy said, ‘That’s the brightest light I’ve ever seen!’”

ON APRIL 24, 1940, U.A. Johnson and eight other determined, farsighted citizens of rural Horry County met with farm agent V.M. Johnston to sign papers forming Horry Electric Cooperative.

Each paid a \$5 membership fee. With \$45 and a corporate organization, they applied to the federal Rural Electrification Administration for a \$238,000 loan.

The cooperative was on its way.

On Jan. 7, 1941, Horry Electric energized its first lines. Getting there took a lot of energy. The nine men, and others like Johnson’s son, Lee, had to persuade neighbors to pay \$5 membership fees and grant the co-op access to their land to build lines. They managed to convince 627 charter members to sign up for service.

U.A. Johnson’s granddaughter, Mildred Perritt of Galivants Ferry, passed away in September. When *South Carolina Living* visited her in April 2014, she said her grandfather and father, then a county policeman,

**The Johnson family in 1935, including (back row, from left) Wilson Skipper, Uric Johnson, unknown, Tolar Johnson, Lee Johnson and Ruth Johnson. Children (from left) are Lloyd, Isla, Virginia, Wilbur and Vienna Johnson. The baby her mother is holding is unknown, Mildred Perritt said. This photo, provided by Susan Hardwick, is from a book, published by *The Horry Independent*, celebrating the 100th anniversary of the Town of Aynor.**



WALTER ALBRECHT

Mildred Perritt’s grandfather, U.A. Johnson (right), and her father, Robert Leon “Lee” Johnson, later chief of Horry County police, signed up many members for the fledgling Horry Electric Cooperative. U.A. Johnson served on the co-op’s first Board of Trustees, representing District 9 from 1940 to 1943. Other original board members were P.S. Page, D.M. Grainger, H.E. Stevens, William J. Jordan, H.L. Lupo, W. Hal King, Thelton C. Hardee and P.L. Elvington.

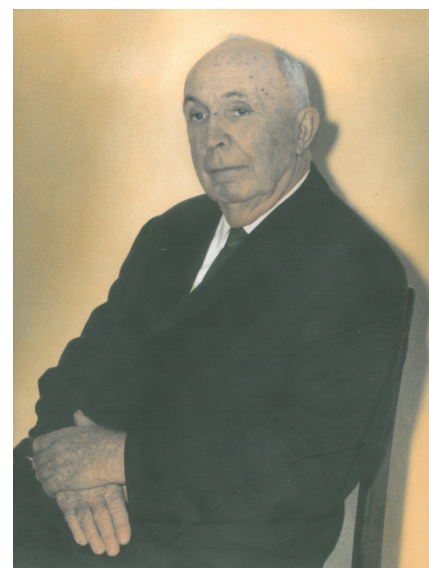
put in a lot of legwork to get electricity to areas the for-profit power companies declined to serve. “They went everywhere trying to get people to sign up,” she said. “People were afraid they would lose their land to the co-op.”

Her grandfather, Perritt said, was a farmer who ran a store part time. Although he was successful, eventually leaving farms to all of his 11 children, nobody had it easy in rural America back then. “Well, Lord, we didn’t have no way to cool your drinks or nothing,” Perritt recalled. “No electricity, you know.”

Her father, who became chief of county police in 1959, and her mother, Ruth, had nine children. Perritt

recalled growing up “getting our lessons by the oil lamps.”

Life brightened considerably with co-op power, which arrived when Perritt was four years old. Her memory of the night the lights came on was still clear in 2014: She was riding in a car that her father was driving. “You could see it through the trees. Daddy said, ‘That’s the brightest light I’ve ever



seen!’ I remember seeing that light from a long ways, and I knew we had electricity,” Perritt said, still beaming at the memory.

To the end, she remained proud of the part her family played in pushing back the darkness. “Daddy and Granddaddy both worked hard for the Horry Electric!” Perritt said.

**We’re interviewing co-op members and former employees who recall “when the lights came on.” Let us know if you, or someone you know, has bright memories of those days. And tell us if you have vintage appliances, electrical items, memorabilia or photographs from the early days of rural electrification. Have a story to share? Contact Chase Toler at (803) 739-3032 (email chase.toler@ecsc.org). He is employed by The Electric Cooperatives of S.C., Inc., the state association of co-ops, including Horry Electric Cooperative.**

## WE'RE THANKFUL FOR THESE EARLY CO-OP LEADERS WHO HELPED US GET STARTED



W. Hal King represented District 1 for 31 consecutive years, 1940-71.



H.L. Lupo represented District 5 continuously from 1940 to 1977.



N.T. Collins represented District 8 1949-1950, before H.E. Stevens regained the board seat.

### Two who came early, stuck around



Henry G. McNeill (left) served just two years on HEC's board in the 1940s, representing District 8 from 1947 to 1948 before losing his seat for two years. He regained it in 1950, serving until his passing in 2007. McNeill



helped establish not only Horry Electric but also Horry Telephone Cooperative. Meanwhile, Lloyd P. Williams (right) served as HEC's first general manager, holding the post from 1940 through 1956.



P.S. Page represented District 2 1940-48, followed by O.M. Smith (not pictured), who served the district from 1948 to 1950.



Thelton C. "T.C." Hardee represented District 6 for 22 years, 1940-46 and 1948-64.



C.M. Bullock represented District 9 for 26 years, 1946-1972, following George B. Moore (1944-46) and U.A. Johnson.



Dolphus M. Grainger represented District 3 from 1940 to 1969.



Fred P. McNeill served 31 years, representing District 7 from 1943 to 1974. He succeeded William J. Jordan (not pictured), who represented District 7 1940-43.



I.L. Anderson, District 4, 1948-1950.



P.L. Elvington represented District 4 from 1940 to 1946, followed by Henry G. McNeill (see item at upper right), 1947-48, and I.L. Anderson (right column), 1948-50.



H.E. Stevens represented District 8 for 33 years between 1940 and 1981. D.M. Lupo and A.J. Dorman (both not pictured) also held the seat in the 1940s.



P.M. Jacobs, District 6, 1946-48.

### The first lineman's pay—and other juicy bits from board meeting minutes back in the '40s

Interesting tidbits from the minutes of meetings of HEC's Board of Trustees in the 1940s:

**November 25, 1940:** Board President P.S. Page and Secretary H.E. Stevens were "authorized and directed to purchase from Lee Chevrolet Company in Conway for, and in behalf of the cooperative, one 1941 Chevrolet three-quarter-ton pickup with extra low gear, mud grip rear tires for the sum of \$698.25."

**December 17, 1940:** William O. Phillips was employed as maintenance man and/or lineman for \$115 per month.

**December 15, 1941:** Catherine Hall was hired as stenographer, with pay of \$75 per month.

**April 21, 1941:** Hubert F. Jordan hired as bookkeeper at \$75 per month.

**July 2, 1941:** Lucille Lupo was hired as electrification advisor, with pay of \$85 a month. Also at this meeting, the board authorized purchase of another new truck from Palmetto Chevrolet in Conway, a three-quarter-ton Chevrolet pickup with four-speed transmission, front and rear bumpers, 700 X17 tires w/6 ply on front, 8 ply on back, extending rear mirror for \$768.

**November 14, 1946:** The minutes report, "A fund of no more than \$100 to be set up for the purpose of purchasing prizes to the members at the Regular Annual Meeting on December 3, 1946."

TRUSTEE PHOTOS FROM Horry Electric Archives



## How to become a trustee of Horry Electric Cooperative, Inc.

### I. QUALIFICATIONS:

Below are the qualifications that must be met before a person can be elected to the Cooperative's Board of Trustees:

A. Must be a member in good standing with the Cooperative and receive electrical service from the Cooperative at his or her primary abode.

B. Must reside in the Trustee District from which Trustee is to be elected.

C. Shall not be a close relative of an incumbent board member, or of an existing employee of the Cooperative, or is employed by the Cooperative, or was employed by the Cooperative at any time during the preceding five (5) years.

D. Must not be employed by or financially interested in a competing enterprise, or a business selling electric energy or supplies to the Cooperative, or a business primarily engaged in selling electrical or plumbing appliances, fixtures, supplies or wiring to, among others, the members of the Cooperative.

### II. NOMINATIONS:

Below are the two methods that may be used to become nominated for the purpose of being elected as a member of the Cooperative's Board of Trustees.

A. A member may be nominated by the appointed Nominating Committee of the Cooperative as a candidate for the Board of Trustees from the

Trustee District in which the member lives and for that District's seat. The Nominating Committee will meet in January prior to the Annual Meeting held in May. For the exact date of the Nominating Committee meeting, call the office at (843) 369-2211.

B. A member can also be nominated by petition as a candidate for the Board of Trustees from the Trustee District in which the member lives and for that District's seat. Official forms must be obtained from the Cooperative

and must be signed by any twenty-five or more active member/owners in order to be considered valid. The deadline for petition candidates is sixty days prior to the date of the Annual Meeting of Members.

### III. ELECTION:

The following is how the election will take place at the Annual Meeting:

All members who have been nominated by the Nominating Committee or who have been nominated by petition will have their

names appear on the official ballot of the Cooperative. The members who are in attendance at the Annual Meeting will then select their representative to the Board of Trustees by secret ballot. If a member has been properly nominated and has no opposition, that member may be voted to the Board of Trustees by acclamation. ☺

**For additional information on this procedure, please refer to the Cooperative's Bylaws, which are posted on [horryelectric.com](http://horryelectric.com). For a printed copy of the Bylaws, just drop by our office.**

## Your Annual Meeting date is Tuesday, May 10, 2016 Coastal Carolina University Campus

### Time Schedule

ITEM	BYLAW PROVISIONS	ACTION
Nominating Committee Appointed:	Not less than one hundred twenty (120) days (1/11/16) nor more than one hundred fifty (150) days (12/12/15) prior to meeting of members, consisting of five (5) members.	To be appointed at December 2015 Board Meeting. Nominating Committee to meet in January 2016.
Notice of Meeting of Nominating Committee in local newspaper:	RUS requirement (No Bylaw provision)	Published in a local newspaper January 2016.
Posting of Report of Nominating Committee:	Nominees: At least ninety (90) days before Annual Meeting.	Post before 2/9/16.
Deadline for Petition Candidates and posting of report:	Not less than sixty (60) days prior to meeting of members.	Deadline for Petition Candidates: 3/9/16 (Wed.) at Noon. Post in office by 3/11/16 (Fri.).
Credentials and Elections Committee Appointment:	At least ten (10) days—(by 4/29/16) before any meeting of the members, and consisting of at least nine (9) members.	To be appointed at March 2016 Board Meeting.
Notice of Meeting:	Not less than ten (10) days (4/29/16) nor more than twenty-five (25) days (4/15/16) before the date of the meeting.	Direct mailers to all consumer/owners between 4/15/16 and 4/29/16.

With names and addresses of all nominees, distinguishing between those nominated by the Committee and those nominated by petition.

**Horry Electric Cooperative, Inc.; P.O. Box 119; Conway, SC 29528-0119; (843) 369-2211**