

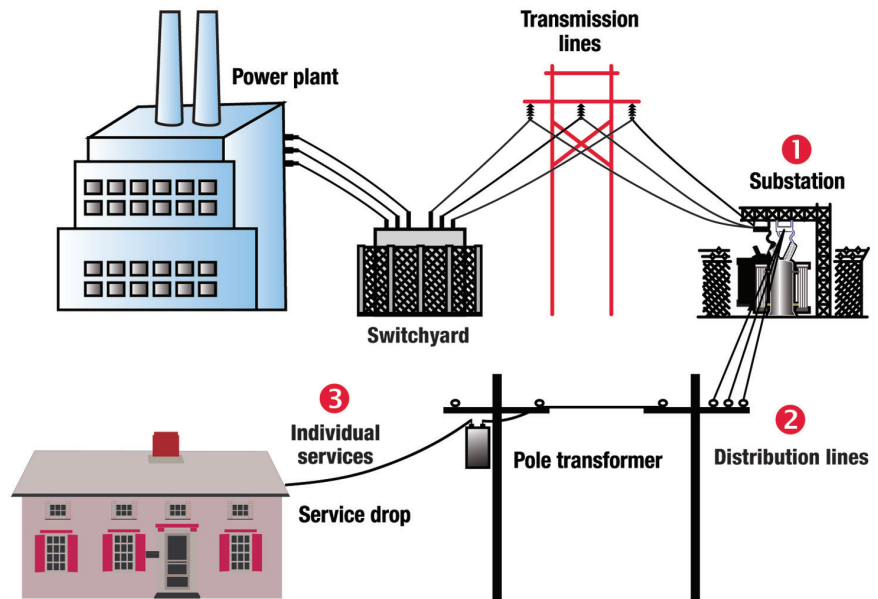
Restoring service after the storm

Goal is to get lights back on ASAP

RESTORING POWER AFTER a major outage is an enormous undertaking that involves much more than simply throwing a switch or removing a tree from a line.

The main goal is to safely restore power to the greatest number of members in the shortest time possible. Keep in mind, if there is damage to power plants, switchyards or transmission lines, those facilities must be repaired by our power supplier before we can restore your service. Transmission lines seldom fail, but they can be damaged by lightning, ice storms, tornadoes and hurricanes. Tens of thousands of people could be served by a single high-voltage transmission line.

When those facilities are working, problems in your co-op's electric distribution system can be corrected. Three primary areas of our system must be addressed.



1—Substations are repaired first. A co-op may have several local distribution substations, each serving thousands of consumers. When a major outage occurs, the local distribution substations are checked first. If the problem can be corrected at the substation level, power may be restored to a large number of people.

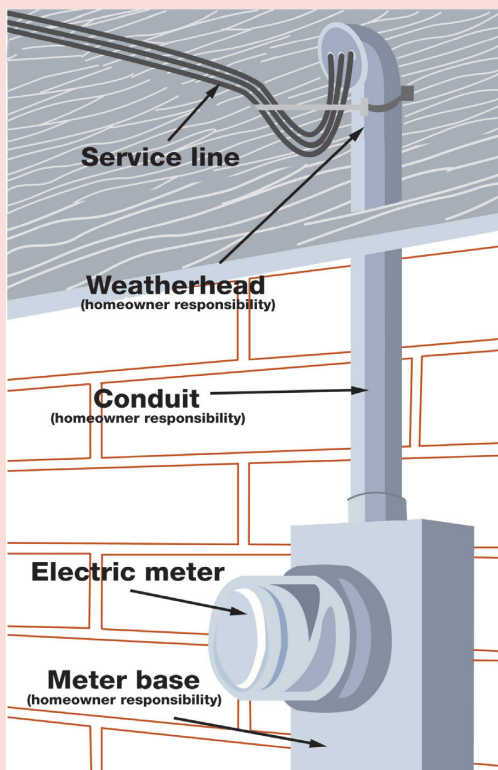
2—Distribution lines are repaired. Main distribution supply lines are checked next, if the problem cannot be isolated at the substation. These supply lines carry electricity away from the substation to a group of members, such as a subdivision. When power is restored at this stage, all consumers served by this supply line could see the

lights come on, as long as there is no problem farther down the line.

3—Individual services are restored. The final supply lines, called service lines, carry power from the transformer on utility poles or underground transformers outside houses or other buildings. Line crews fix the remaining outages based on restoring service to the greatest number of consumers.

Sometimes, damage will occur on the service line between your house and the transformer on the nearby pole. This may explain why you have no power when your neighbor does. Your co-op needs to know you have an outage, so a service crew can repair it.

To report a power outage, call PowerTouch, (843) 369-2212. ☎



If your electric service is damaged

If there is damage to the equipment where the service drop enters your home, you may need to get an electrician to repair it before the co-op can safely restore your service. The weatherhead, where service lines enter the conduit leading to your home's electric meter, is the responsibility of the homeowner as are the conduit and the meter base. The co-op can replace or repair damaged meters or service lines, but if you see damage to your home's weatherhead, conduit or meter base, contact an electrician immediately to get repairs started.